

HUMAN TRAFFICKING AND NATURAL DISASTERS: PUBLIC SECTOR AWARENESS PLAN



Both during and in the aftermath of natural disasters, the collapse of infrastructure and displacement of populations create a fertile ground for human traffickers. Human traffickers identify and exploit vulnerabilities created or compounded by natural disasters in order to profit off disaster victims and/or relief efforts. Due to the heightened risk of human trafficking in communities impacted by disasters, it is vital that TAT public sector partners are equipped to mitigate human trafficking risk before, during and after natural disasters.

HOW DO PUBLIC SECTOR PARTNERS CURRENTLY CARRY OUT DISASTER RELIEF EFFORTS?

	BEFORE	DURING	AFTER
Government Agencies	Conducting community outreach and disaster planning; monitoring vulnerable populations	Coordinating community crisis response and communication among local law enforcement, first responders and service providers; disseminating information about available resources	Providing access to mobile or public shelters; short- and long-term victim service provision; planning and implementing restoration efforts for damaged community infrastructures
Law Enforcement	Creating and safeguarding evacuation/ transportation routes; coordinating incident command for joint information centers	Crisis response and crime control; facilitating resource provision and victim identification	Conducting criminal investigations; information-sharing and reporting
Task Forces	Carrying out community education on disaster preparedness; building relationships between the private and public sectors to facilitate disaster relief; risk-mapping high displacement areas to monitor vulnerable populations	Deploying trained personnel to shelters, evacuation centers and aid distribution sites; monitoring for suspicious activity during disaster relief and collaborating with law enforcement to intervene	Monitoring relief and reconstruction efforts; facilitating investigation and prosecution of crimes that occurred during disasters; collecting and analyzing data to improve future preparedness



WHAT CAN PUBLIC SECTOR PARTNERS DO TO COMBAT HUMAN TRAFFICKING IN DISASTER-IMPACTED COMMUNITIES?

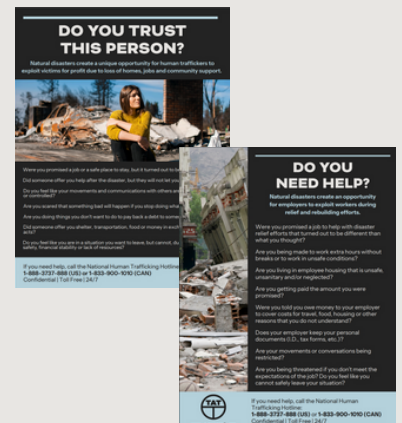
Government Agencies

- ▶ **Develop protocols and procedures** in advance to mitigate human trafficking risk during and after natural disasters.
- ▶ **Coordinate with public and private sector stakeholders** to have response and relief efforts in place that incorporate human trafficking awareness:
 - *Public sector:* work with law enforcement to disseminate information about human trafficking risk and resources after disasters, as well as to prioritize proactive identification of trafficking incidents.
 - *Private sector:* partner with local stakeholders to carry out disaster preparation and response (e.g., activating trucking companies to transport and distribute relief materials post-disaster; working with local transit and school transportation to create evacuation and transportation plans).
- ▶ **Distribute human trafficking awareness materials** (e.g., TAT victim-centered posters, TAT wallet cards) during recovery and reconstructive efforts post-disaster.
- ▶ **Download and share TAT app** to facilitate human trafficking identification and reporting.
- ▶ **Share information** about the intersection of natural disasters and human trafficking on social media and in awareness campaigns (e.g. [City of Houston Mayor's Office #WatchforTraffick Campaign](#)).
- ▶ **Use ethical hiring and contracting** practices during rebuilding efforts.



Law Enforcement

- ▶ **Ensure law enforcement personnel have completed TAT's training.**
 - Contact le@tatnonprofit.org to request access to TAT's LE modules.
- ▶ **Establish partnerships** with local service providers as well as humanitarian and relief organizations.
 - Provide training to aid workers and share information about human trafficking risk created and exacerbated by disasters.
- ▶ **Facilitate awareness and information sharing** around human trafficking during and after natural disasters.
 - Establish a human trafficking hotline or expand upon existing hotline to accommodate a higher volume of signals/calls.
- ▶ **Raise public awareness of available shelters, service providers and resources** available to disaster and human trafficking victims.
 - Hold community meetings before disasters to inform community members of increased exploitation risk during and after disasters.
 - Make information available in multiple languages.
- ▶ **Form and/or join a task force** to enhance human trafficking identification and information sharing amongst local, state and federal partners.



Task Forces

- ▶ **Provide human trafficking training and awareness** to disaster relief workers and personnel providing services to disaster victims.
 - **Law enforcement:**
 - Share information about TAT's law enforcement modules with local law enforcement personnel.
 - Contact le@tatnonprofit.org to request access to the LE modules.
 - **Frontline workers:**
 - Share TAT's training video, *You've Seen Us Before*, with frontline workers to educate them on the realities of human trafficking.
 - View the trailer for TAT's training video [here](#) and contact info@tatnonprofit.org to access the full video.
 - Distribute anti-human trafficking materials to frontline workers that provide information about risks of human trafficking and instructions on how to report suspected trafficking in areas impacted by natural disasters.
 - Visit TAT's [Community Resources page](#) to access informational materials and ways to spread awareness about human trafficking.
- ▶ **Coordinate with public and private sector stakeholders** to have response and relief efforts in place that incorporate human trafficking awareness:
 - **Public sector:** work with law enforcement and local government agencies to disseminate information about human trafficking risk and resources after disasters, as well as to prioritize proactive identification of trafficking incidents.
 - **Private sector:** partner with local stakeholders to carry out disaster preparation and response (e.g., activating trucking companies to transport and distribute relief and anti-trafficking materials post-disaster; working with local transit and school transportation to create evacuation and transportation plans while promoting human trafficking awareness).
- ▶ **Distribute victim-centered human trafficking awareness materials** during recovery and reconstructive efforts post-disaster.
 - Share TAT's victim-facing sex and labor trafficking posters with local service providers, shelters, truck stop partners, local bus and transit agencies and other stakeholders/locations that may intersect with potential trafficking victims.
- ▶ **Download and share TAT app** to facilitate human trafficking identification and reporting.
- ▶ **Share information** about the intersection of natural disasters and human trafficking on social media and in awareness campaigns.

