

HUMAN TRAFFICKING AND NATURAL DISASTERS: INDUSTRY AWARENESS PLAN

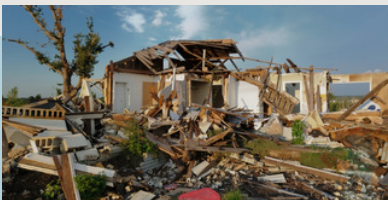


TAT is a non-profit organization that empowers individuals at companies and agencies across North America to help end human trafficking. By educating and equipping these workforces to fight human trafficking, TAT is mobilizing an army of everyday heroes. Visit www.tatnonprofit.org or email info@tatnonprofit.org for more info.

Human traffickers identify and exploit vulnerabilities created or compounded by natural disasters in order to profit off disaster victims and/or relief efforts. Due to the heightened risk of human trafficking in communities impacted by disasters, it is vital that TAT industry partners are trained and equipped to mitigate human trafficking risk before, during and after natural disasters.

HOW DO INDUSTRY PARTNERS CURRENTLY INTERSECT WITH DISASTER RELIEF EFFORTS?

| BEFORE | DURING | AFTER |
|--|--|---|
| <p>Trucking: hiring third parties and contractors; maintaining strong supply chains; establishing reliable communication with relief coordinators and emergency responders</p> <p>Truck stops: providing essential supplies and fuel ahead of disasters</p> <p>Transit/motorcoach: facilitating accessible transportation and evacuation efforts; coordinating disaster response with emergency services</p> <p>School transportation: coordinating and supporting evacuation plans with first responders and community organizations; sharing resources with students and families</p> <p>Energy: strengthening energy infrastructures; establishing partnerships and communication channels with emergency services and other responding entities</p> | <p>Trucking: transporting emergency relief resources; facilitating debris removal</p> <p>Truck stops: supporting the delivery of emergency supplies</p> <p>Transit/motorcoach: transporting disaster victims to safety; providing transit to essential workers and emergency response/relief personnel</p> <p>School transportation: transporting students and school staff to safety; coordinating with transit and emergency services to meet increased needs (evacuation, transporting response personnel, delivering food/supplies, etc.)</p> <p>Energy: protecting energy infrastructures; restoring power for and providing fuel to emergency response services and vehicles; communicating information about outages to the public</p> | <p>Trucking: delivering supplies and resources to shelters, medical facilities and other service providers; distributing aid and/or donated goods; providing logistics within long-term recovery plans</p> <p>Truck stops: offering resources for truck drivers involved in disaster relief; serving as distribution points for relief outreach; providing information about available relief resources</p> <p>Transit/motorcoach: enabling victim access to essential services; facilitating community relief and rebuilding efforts through movement of essential personnel and resources</p> <p>School transportation: transporting displaced students to and from school</p> <p>Energy: restoring damaged energy infrastructures; supporting recovery and rebuilding efforts in impacted communities</p> |



WHAT CAN TAT INDUSTRY PARTNERS DO TO COMBAT HUMAN TRAFFICKING IN DISASTER-IMPACTED COMMUNITIES?

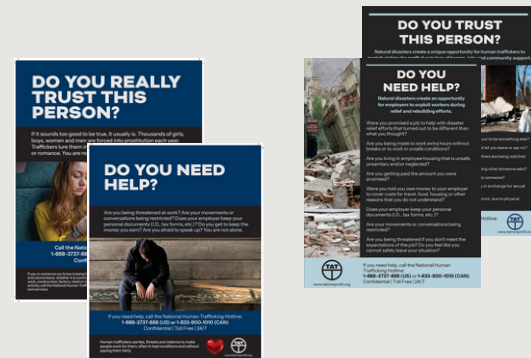
Trucking/Truck Stops

- ▶ Ensure appropriate TAT trucking training has been completed by all drivers and truck stop personnel.
- ▶ Distribute human trafficking awareness materials (e.g., TAT victim-centered posters, TAT wallet cards) during recovery and reconstructive efforts post-disaster.
- ▶ Download and share TAT app to facilitate human trafficking awareness, reporting and service provider identification.
- ▶ Participate in company-wide disaster relief or volunteer efforts to aid essential resource distribution or community rebuilding.
- ▶ Share information about the intersection of natural disasters and human trafficking on social media.
- ▶ Use ethical hiring, contracting and labor practices before and after disasters (e.g., conduct modern-day slavery audit).
- ▶ Co-host a Connecting-the-Dots webinar session focused on natural disasters and human trafficking intersections with TAT.



Bus (Transit, Motorcoach, School)

- ▶ Ensure TAT training (transit/motorcoach or school transportation) has been completed by all personnel.
- ▶ Distribute TAT wallet cards to transit and school transportation personnel.
- ▶ Hang TAT victim-centered posters on/in buses, trains and public transit facilities.
- ▶ Post TAT's youth and parent materials on/in buses, trains, transit centers, etc.
- ▶ Download and share TAT app to facilitate human trafficking awareness, reporting and service provider identification.
- ▶ Share information about the intersection of natural disasters and human trafficking with employees and/or on social media.



Energy

- ▶ Ensure TAT energy training has been completed by all personnel.
- ▶ Provide TAT wallet cards to workers responding to disaster needs and use TAT's safety moment facilitation guide at safety briefings.
- ▶ Use ethical hiring, contracting and labor practices before and after disasters (e.g., conduct modern-day slavery audit).
- ▶ Hang TAT posters around job sites and in break rooms.
 - For job sites/break rooms, we recommend the "Keep the Community Safe"/"Know the Signs" posters.
- ▶ Download and share TAT app to facilitate human trafficking awareness, reporting and service provider identification.
- ▶ Share information about the intersection of natural disasters and human trafficking on social media.

